



FMP プランジアーバ (高送り用 往復突き加工用)

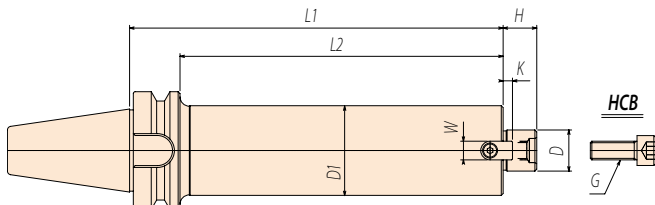
PLUNGE ARBOR (PLUNGE CUTTING & HIGH FEED CUTTING)



センタースルーオイルホール対応可能! (オプション)

Coolant through oil hole type is available (option).

- ◆ 仕上げ面の直角度、平坦度、高精度化。
This tool helps to produce high flatness, high accuracy work.
- ◆ 仕上げ面のうねりがほとんど出ない。No undulation on finished surface of work.
- ◆ 金型の深い断面に最適。All ground tool body.
- ◆ 荒、仕上げ加工で加工時間の短縮。Work well for deep cutting, and high feed cutting.
- ◆ 高剛性と高速仕様。High rigidity.



BT40

| CODE | D | L1 | L2 | H | D1 | K | W | G |
|----------------------|------|-----|-----|----|----|---|-----|--------------|
| BT40-FMP16 -150 - 40 | 16 | 150 | 123 | 16 | 38 | 5 | 8 | HCB-M8 × 35 |
| | | 200 | 173 | | | | | |
| BT40-FMP22 -150 - 50 | 22 | 150 | 123 | 18 | 48 | 5 | 10 | HCB-M10 × 35 |
| | | 200 | 173 | | | | | |
| BT40-FMP22 -150 - 63 | 22 | 150 | 123 | 18 | 60 | 5 | 10 | HCB-M10 × 35 |
| | | 200 | 173 | | | | | |
| BT40-FMP25.4 -150 | 25.4 | 150 | 123 | 22 | 60 | 5 | 9.5 | MBA-M12 |
| | | 200 | 173 | | | | | |

BT50

| CODE | D | L1 | L2 | H | D1 | K | W | G | | | | | |
|----------------------|------|----------------------|-----|----|-----|-----|-----|--------------|----|----|----|----|--------------|
| BT50-FMP16 - 90 - 40 | 16 | 90 | 52 | 16 | 38 | 5 | 8 | HCB-M8 × 35 | | | | | |
| | | 120 | 82 | | | | | | | | | | |
| | | 150 | 112 | | | | | | | | | | |
| | | 200 | 162 | | | | | | | | | | |
| BT50-FMP22 -150 - 50 | 22 | 150 | 112 | 18 | 48 | 5 | 10 | HCB-M10 × 35 | | | | | |
| | | 200 | 162 | | | | | | | | | | |
| | | 250 | 212 | | | | | | | | | | |
| | | 300 | 262 | | | | | | | | | | |
| | | BT50-FMP22 -150 - 63 | 22 | | 350 | 312 | | | 18 | 60 | 5 | 10 | HCB-M10 × 35 |
| | | | | | 400 | 362 | | | | | | | |
| | | | | | 500 | 462 | | | | | | | |
| | | | | | 150 | 112 | | | | 20 | 73 | | |
| 200 | 162 | | | | | | | | | | | | |
| 250 | 212 | | | | | | | | | | | | |
| 300 | 262 | | | | | | | | | | | | |
| 350 | 312 | | | | | | | | | | | | |
| 400 | 362 | | | | | | | | | | | | |
| BT50-FMP22 -150 - 63 | 22 | 500 | 462 | 18 | 60 | 5 | 10 | HCB-M10 × 35 | | | | | |
| | | 150 | 112 | | | | | | | | | | |
| | | 200 | 162 | | | | | | | | | | |
| | | 250 | 212 | | | | | | | | | | |
| | | 300 | 262 | | | | | | | | | | |
| | | 350 | 312 | | | | | | | | | | |
| BT50-FMP27 -150 | 27 | 150 | 112 | 20 | 73 | 6 | 12 | HCB-M12 × 35 | | | | | |
| | | 200 | 162 | | | | | | | | | | |
| | | 250 | 212 | | | | | | | | | | |
| | | 300 | 262 | | | | | | | | | | |
| | | 350 | 312 | | | | | | | | | | |
| | | 400 | 362 | | | | | | | | | | |
| BT50-FMP25.4 -150 | 25.4 | 150 | 112 | 22 | 60 | 5 | 9.5 | MBA-M12 | | | | | |
| | | 200 | 162 | | | | | | | | | | |
| | | 250 | 212 | | | | | | | | | | |
| | | 300 | 262 | | | | | | | | | | |
| | | 350 | 312 | | | | | | | | | | |
| | | 400 | 362 | | | | | | | | | | |
| BT50-FMP25.4 -200 | 25.4 | 150 | 112 | 22 | 60 | 5 | 9.5 | MBA-M12 | | | | | |
| | | 200 | 162 | | | | | | | | | | |
| BT50-FMP25.4 -250 | 25.4 | 150 | 112 | 22 | 60 | 5 | 9.5 | MBA-M12 | | | | | |
| | | 200 | 162 | | | | | | | | | | |
| BT50-FMP25.4 -300 | 25.4 | 150 | 112 | 22 | 60 | 5 | 9.5 | MBA-M12 | | | | | |
| | | 200 | 162 | | | | | | | | | | |
| BT50-FMP25.4 -350 | 25.4 | 150 | 112 | 22 | 60 | 5 | 9.5 | MBA-M12 | | | | | |
| | | 200 | 162 | | | | | | | | | | |
| BT50-FMP25.4 -400 | 25.4 | 150 | 112 | 22 | 60 | 5 | 9.5 | MBA-M12 | | | | | |
| | | 200 | 162 | | | | | | | | | | |
| BT50-FMP25.4 -500 | 25.4 | 150 | 112 | 22 | 60 | 5 | 9.5 | MBA-M12 | | | | | |
| | | 200 | 162 | | | | | | | | | | |

■ 特殊サイズも注文により製作いたします。 Special size is available upon request.

センタースルーオイルホールのご用命は語尾に (-OH) とご指示願います。

センタースルーにてご使用の場合は穴あきクランプボルトが別途必要です。詳細はP67

When ordering coolant through type, add "-OH" to the end of model number.

Special clamping bolt with coolant hole is required for coolant through type (See page 67).



FMP プランジアーバ (高送り用 往復突き加工用)

PLUNGE ARBOR (PLUNGE CUTTING & HIGH FEED CUTTING)



BT50

| CODE | D | L1 | L2 | H | D1 | K | W | G | |
|--------------------------|--------|------------|-----|----|----|---|------|--------------|-----|
| BT50-FMP22.225 -150 - 50 | 22.225 | 150 | 112 | 18 | 47 | 4 | 8 | HCB-M10 × 35 | |
| | | -200 - 50 | 200 | | | | | | 162 |
| | | -250 - 50 | 250 | | | | | | 212 |
| | | -300 - 50 | 300 | | | | | | 262 |
| | | -350 - 50 | 350 | | | | | | 312 |
| | | -400 - 50 | 400 | | | | | | 362 |
| BT50-FMP22.225 -150 - 63 | 22.225 | 150 | 112 | 18 | 60 | 4 | 8 | HCB-M10 × 35 | |
| | | -200 - 63 | 200 | | | | | | 162 |
| | | -250 - 63 | 250 | | | | | | 212 |
| | | -300 - 63 | 300 | | | | | | 262 |
| | | -350 - 63 | 350 | | | | | | 312 |
| | | -400 - 63 | 400 | | | | | | 362 |
| BT50-FMP31.75 -150 - 80 | 31.75 | 150 | 112 | 30 | 76 | 7 | 12.7 | HCB-M16 × 40 | |
| | | -200 - 80 | 200 | | | | | | 162 |
| | | -250 - 80 | 250 | | | | | | 212 |
| | | -300 - 80 | 300 | | | | | | 262 |
| | | -350 - 80 | 350 | | | | | | 312 |
| | | -400 - 80 | 400 | | | | | | 362 |
| BT50-FMP31.75 -150 - 100 | 31.75 | 150 | 112 | 30 | 96 | 7 | 12.7 | HCB-M16 × 40 | |
| | | -200 - 100 | 200 | | | | | | 162 |
| | | -250 - 100 | 250 | | | | | | 212 |
| | | -300 - 100 | 300 | | | | | | 262 |
| | | -350 - 100 | 350 | | | | | | 312 |
| | | -400 - 100 | 400 | | | | | | 362 |
| BT50-FMP38.1 -150 - 125 | 38.1 | 150 | 112 | 34 | 98 | 7 | 15.9 | MBA-M20 | |
| | | -250 - 125 | 200 | | | | | | 162 |
| | | -250 - 125 | 250 | | | | | | 212 |
| | | -300 - 125 | 300 | | | | | | 262 |

■センタースルーオイルホールのご用命は語尾に(-OH)とご指示願います。
 センタースルーにてご使用の場合は穴あきクランプボルトが別途必要です。詳細はP67
 When ordering coolant through type, add "-OH" to the end of model number.
 Special clamping bolt with coolant hole is required for coolant through type (See page 67).

FMP サイドカッタ用アーバ

SIDE CUTTER ARBOR (FMP)



BT40

| CODE | D | L1 | L2 | H | D1 | K | W | G | |
|----------------------|----|-----------|-----|----|----|---|----|--------------|-----|
| BT40-FMP27 -105 - 50 | 27 | 105 | 78 | 20 | 48 | 6 | 12 | HCB-M12 × 35 | |
| | | -150 - 50 | 150 | | | | | | 123 |
| | | -200 - 50 | 200 | | | | | | 173 |

BT50

| CODE | D | L1 | L2 | H | D1 | K | W | G | |
|----------------------|----|-----------|-----|----|----|---|----|--------------|-----|
| BT50-FMP27 -105 - 50 | 27 | 105 | 67 | 20 | 48 | 6 | 12 | HCB-M12 × 35 | |
| | | -150 - 50 | 150 | | | | | | 112 |
| | | -200 - 50 | 200 | | | | | | 162 |
| | | -250 - 50 | 250 | | | | | | 212 |
| | | -300 - 50 | 300 | | | | | | 262 |
| | | -350 - 50 | 350 | | | | | | 312 |

■特殊サイズ、2面拘束アーバMBT(BBT)仕様も受注製作いたします。
 センタースルーオイルホールのご用命は語尾に(-OH)とご指示願います。
 センタースルーにてご使用の場合は穴あきクランプボルトが別途必要です。詳細はP67
 When ordering coolant through type, add "-OH" to the end of model number.
 Special clamping bolt with coolant hole is required for coolant through type (See page 67).



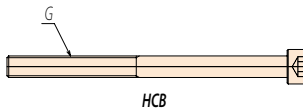
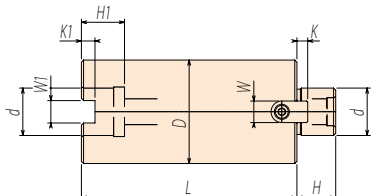
FMP プランジエクステンション

PLUNGE ARBOR EXTENSION



突き加工 ジョイントアーバ FMP型

- ◆ 金型深彫の加工で、アーバの長さが少し足りない時に威力を発揮いたします。
This extension will add extra length for tool easily.



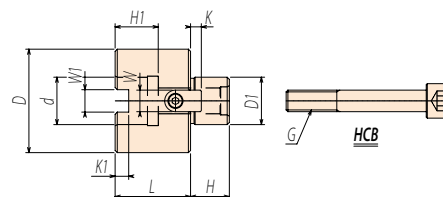
| CODE | d | L | D | H | K | W | H1 | K1 | W1 | G |
|---------------------|--------|-----|----|----|---|------|----|-----|------|-----------|
| FMP22-OD48 - 50 | 22 | 50 | 48 | 18 | 5 | 10 | 20 | 6.3 | 10.4 | M10 × 80 |
| -100 | | 100 | | | | | | | | M10 × 130 |
| -OD60 - 50 | | 50 | 60 | | | | | | | M10 × 80 |
| -100 | | 100 | | | | | | | | M10 × 130 |
| FMP27-OD73 - 50 | 27 | 50 | 73 | 20 | 6 | 12 | 23 | 8 | 12.4 | M12 × 80 |
| -100 | | 100 | | | | | | | | M12 × 130 |
| FMP22.225-OD47 - 50 | 22.225 | 50 | 47 | 18 | 4 | 8 | 19 | 5 | 8.4 | M10 × 80 |
| -100 | | 100 | | | | | | | | M10 × 130 |
| -OD60 - 50 | | 50 | 60 | | | | | | | M10 × 80 |
| -100 | | 100 | | | | | | | | M10 × 130 |
| FMP31.75-OD76 - 60 | 31.75 | 60 | 76 | 30 | 7 | 12.3 | 32 | 8 | 12.7 | M16 × 95 |
| -120 | | 120 | | | | | | | | M16 × 160 |
| -OD96 - 60 | | 60 | 96 | | | | | | | M16 × 95 |
| -120 | | 120 | | | | | | | | M16 × 160 |

■ 特殊サイズも注文により製作いたします。 Special size is available upon request.

FMP プランジ変換アダプター (CONVERSION ADAPTER)

新製品

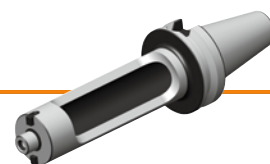
■ 高送り用 往復突き加工用カッター変換アーバ



| CODE | d | D1 | L | D | H | K | W | H1 | K1 | W1 | G |
|--------------------------|-------|--------|----|--------|----|----|---|----|-----|-----|----------|
| FMP22 - 22.225-OD48 - 35 | 22 | 22.225 | 35 | 48 | 18 | 4 | 8 | 20 | 6.3 | 8.4 | M10 × 65 |
| -OD60 - 35 | | | | 60 | | | | | | | |
| FMP22.225 - 22-OD47 - 35 | | | | 22.225 | | | | | | | |
| -OD60 - 35 | 60 | | | | | | | | | | |
| FMP31.75 - 32 -OD76 - 50 | 31.75 | 32 | 50 | | 76 | 22 | 7 | 14 | 32 | 8 | 12.7 |
| -OD96 - 50 | | | | 96 | | | | | | | |

FMH 中空軽量ロングアーバ (高送り用)

LIGHT WEIGHT HOLLOW TYPE ARBOR (HIGH FEED CUTTING)



BT50-FMH

| CODE | D | L1 | L2 | H | D1 | K | W | Kg | G |
|--------------------------|--------|-----|-----|----|----|---|------|------|--------------|
| BT50-FMH22 -250 - 63 | 22 | 250 | 212 | 18 | 60 | 5 | 10 | 6.8 | HCB-M10 × 35 |
| | | 300 | 262 | | | | | 7.4 | |
| | | 350 | 312 | | | | | 8.0 | |
| BT50-FMH22.225 -250 - 63 | 22.225 | 250 | 212 | 18 | 60 | 4 | 8 | 6.8 | HCB-M10 × 35 |
| | | 300 | 262 | | | | | 7.4 | |
| | | 350 | 312 | | | | | 8.0 | |
| BT50-FMH31.75 -250 - 80 | 31.75 | 250 | 212 | 30 | 76 | 7 | 12.3 | 8.7 | HCB-M16 × 40 |
| | | 300 | 262 | | | | | 9.7 | |
| | | 350 | 312 | | | | | 10.7 | |
| BT50-FMH31.75 -300 - 100 | 31.75 | 250 | 212 | 30 | 96 | 7 | 12.3 | 11.4 | HCB-M16 × 40 |
| | | 300 | 262 | | | | | 12.9 | |
| | | 350 | 312 | | | | | 14.4 | |
| BT50-FMH38.1 -250 - 125 | 38.1 | 250 | 212 | 34 | 98 | 9 | 15.9 | 12.0 | MBA-M20 |
| | | 300 | 262 | | | | | 13.6 | |
| | | 350 | 312 | | | | | 15.1 | |

センタースルーオイルホールのご用命は語尾に(-OH)とご指示願います。

When ordering coolant through type, add "-OH" to the end of model number.